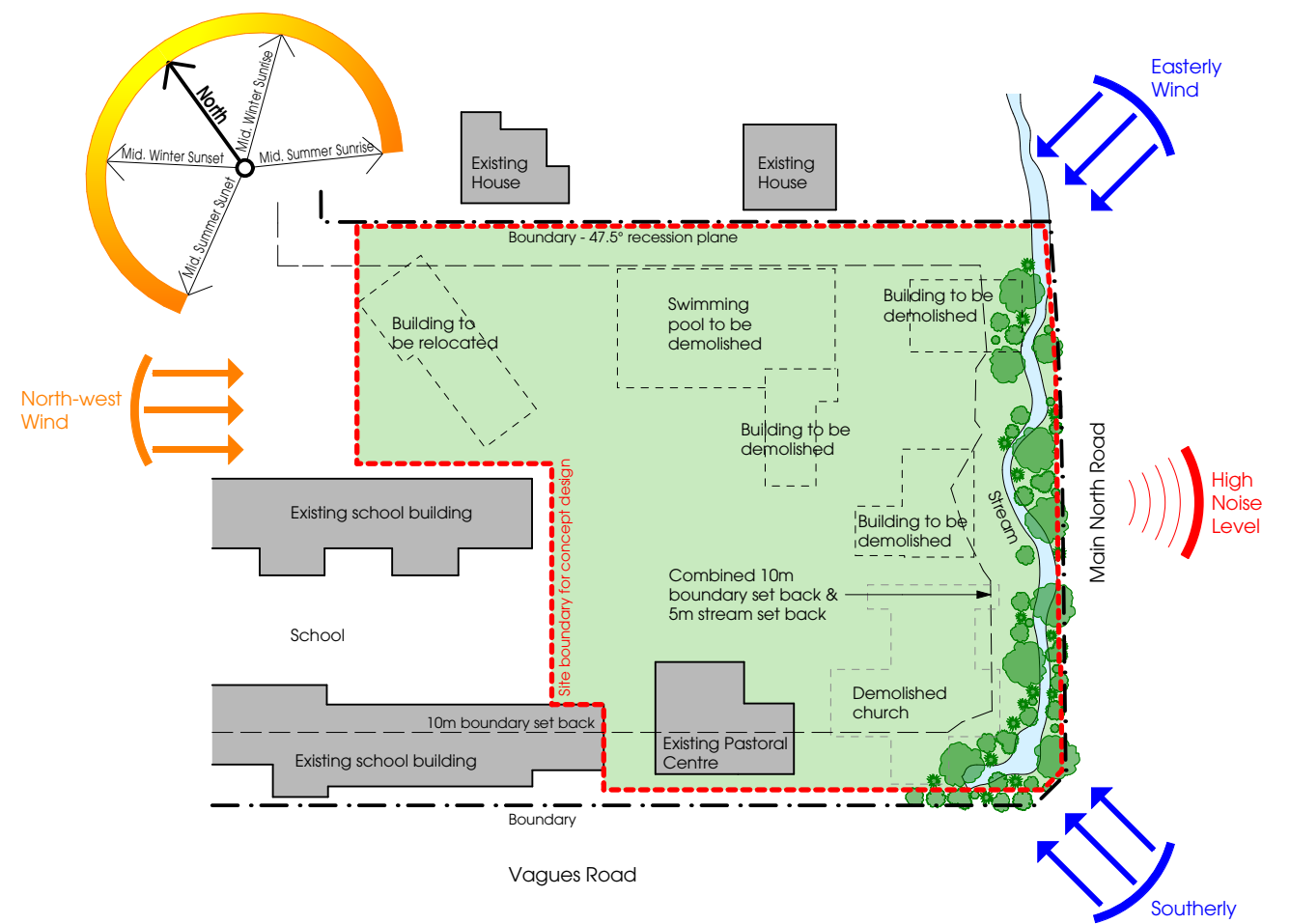


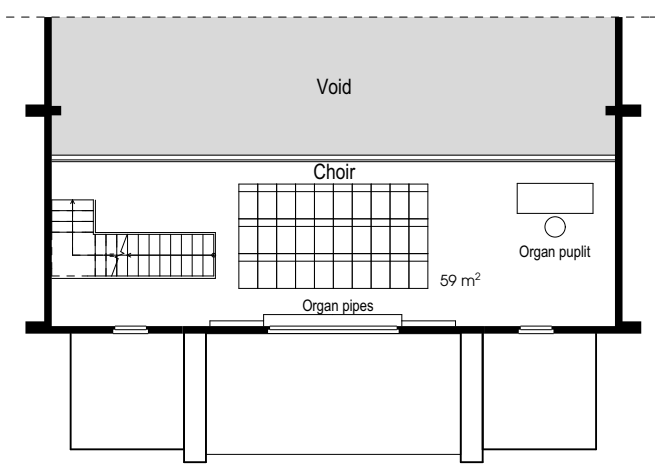
General Floor Plan  
scale 1:200



Aerial View  
scale 1:680



Site Analysis  
scale 1:1000



Choir Loft Plan  
scale 1:200

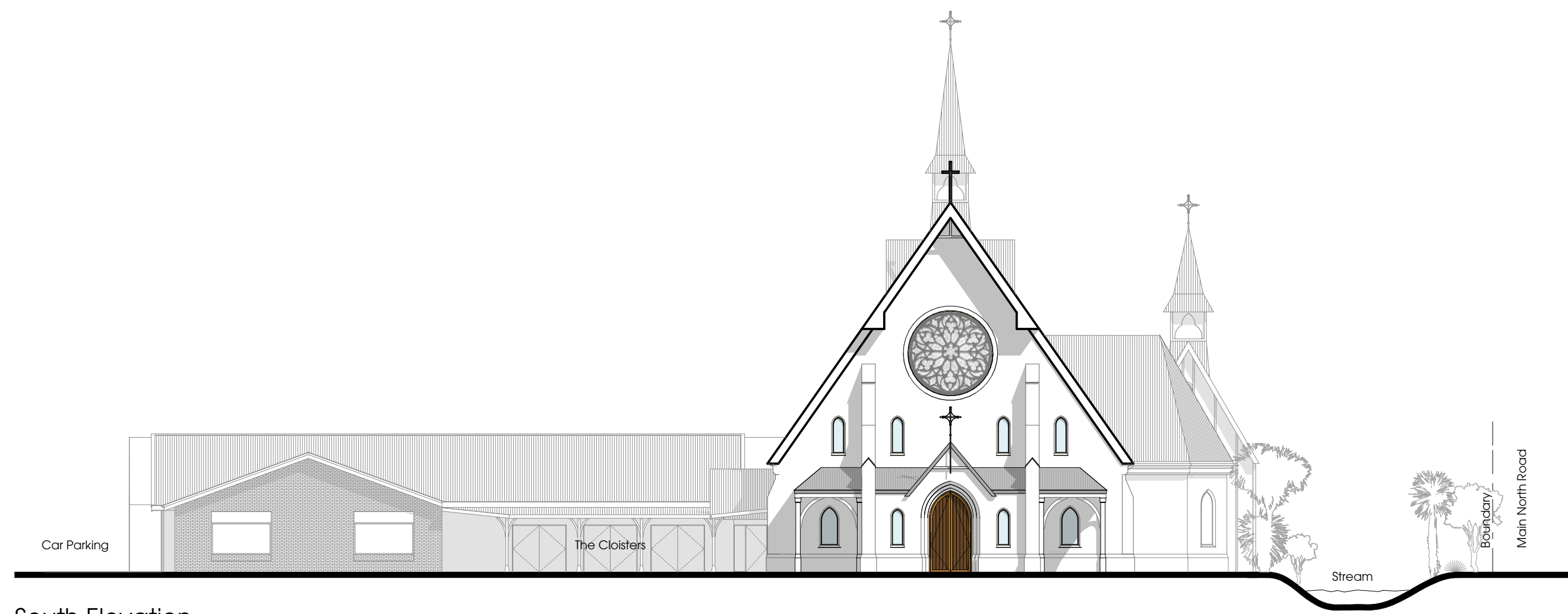




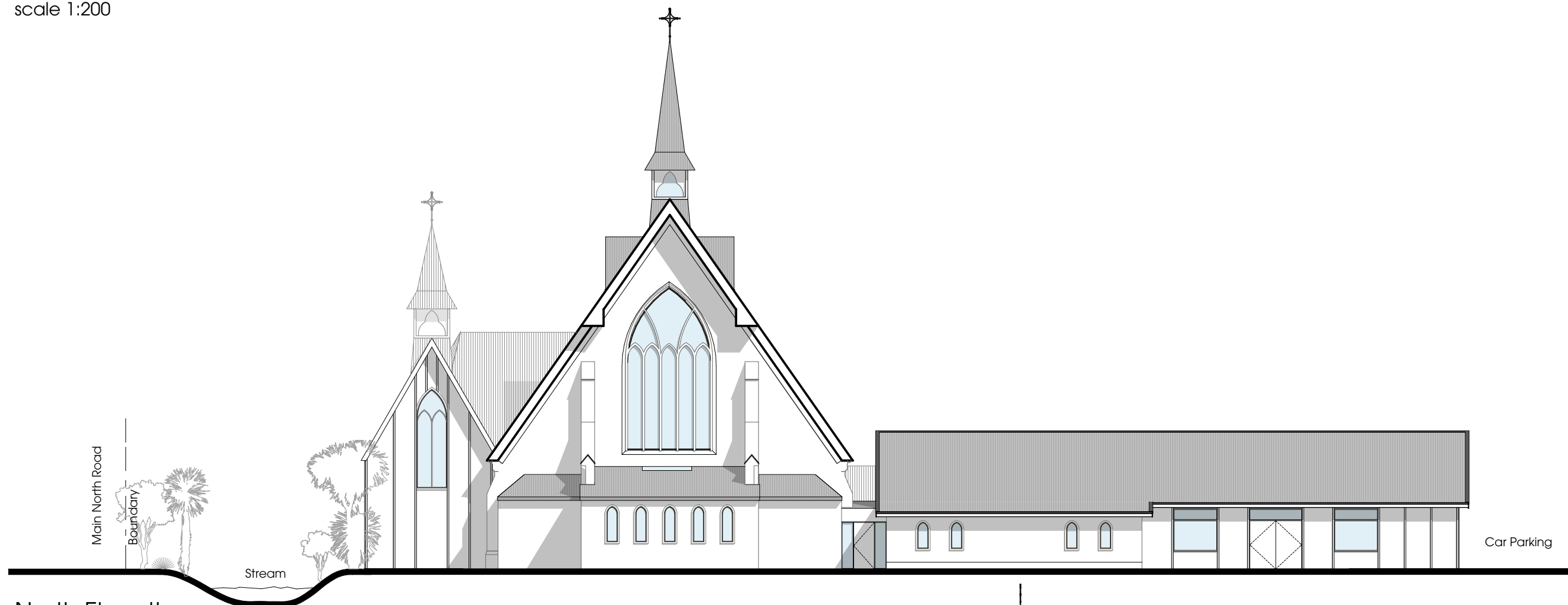




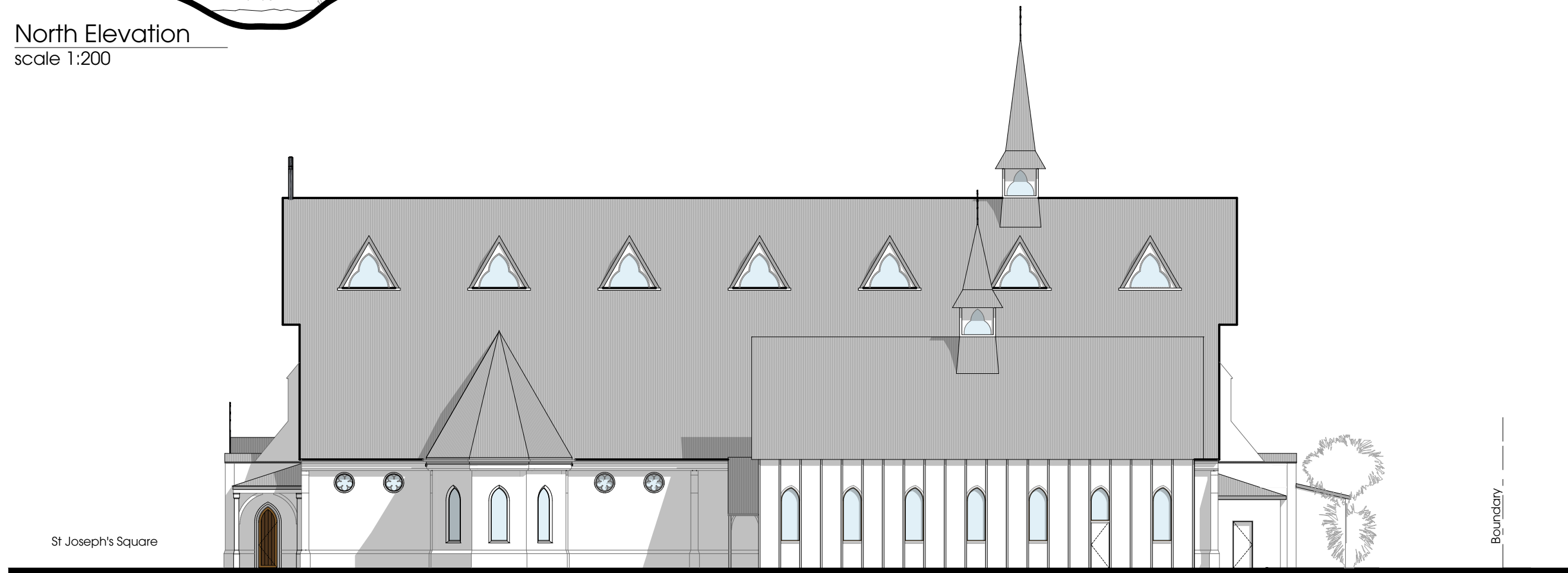




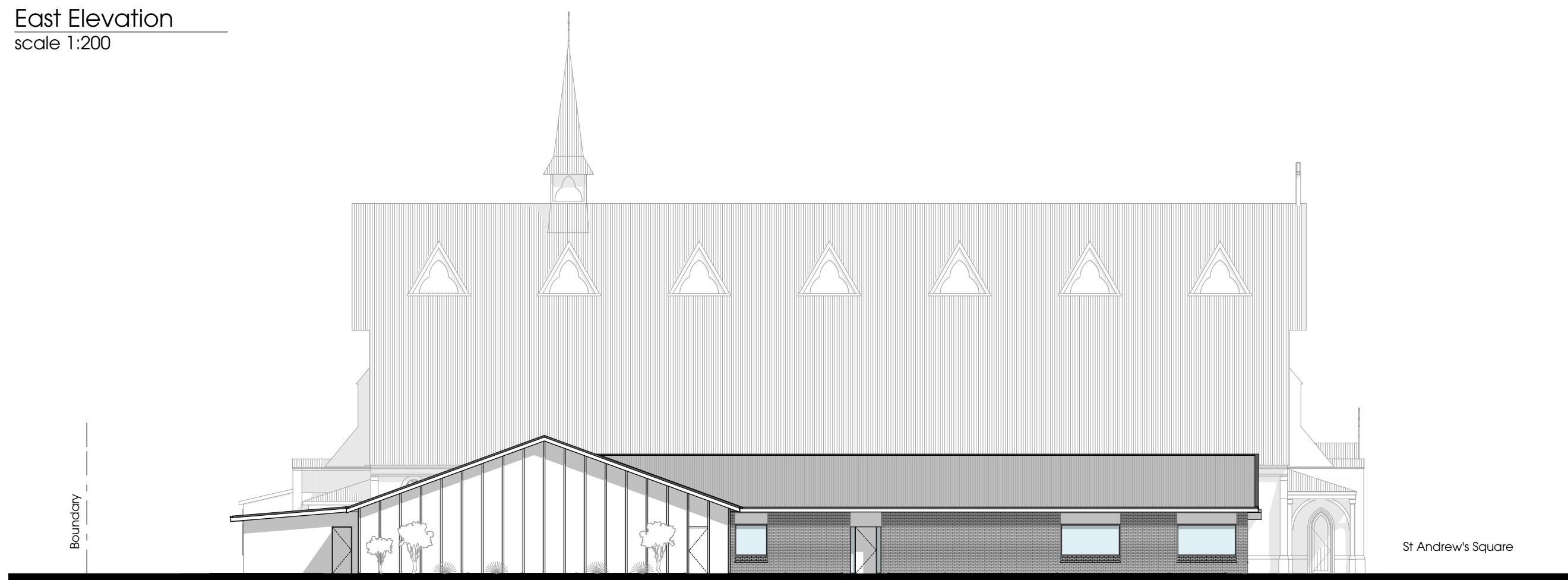
South Elevation  
scale 1:200



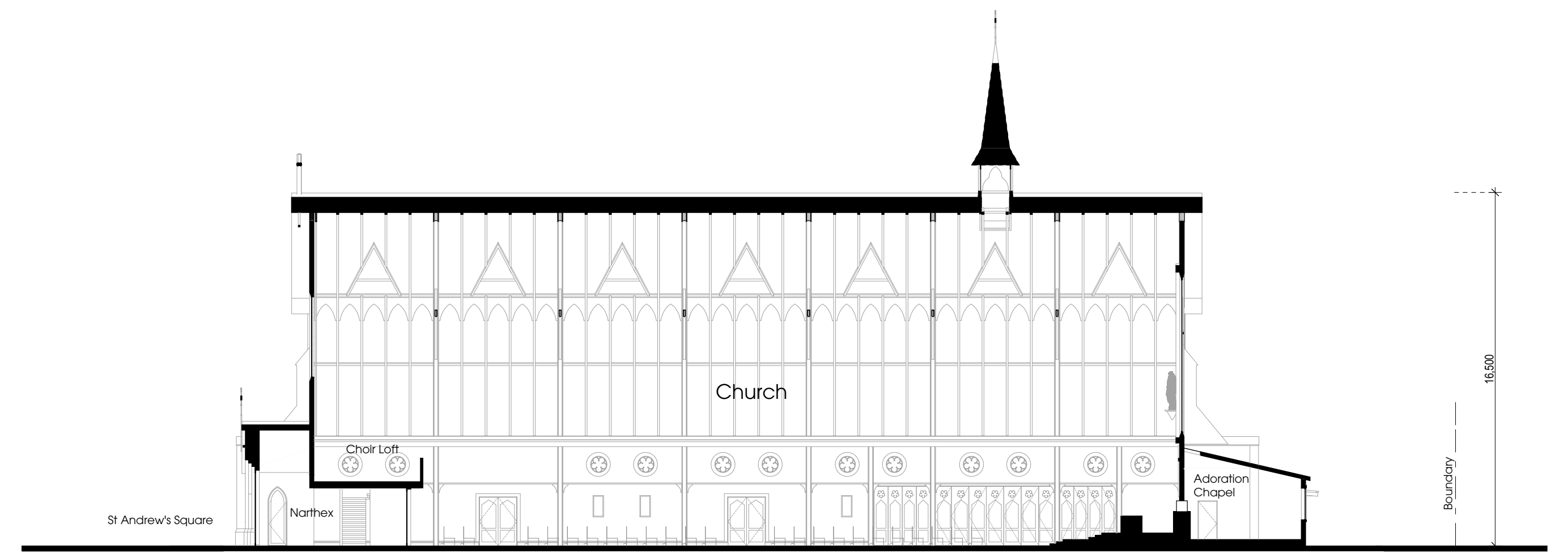
North Elevation  
scale 1:200



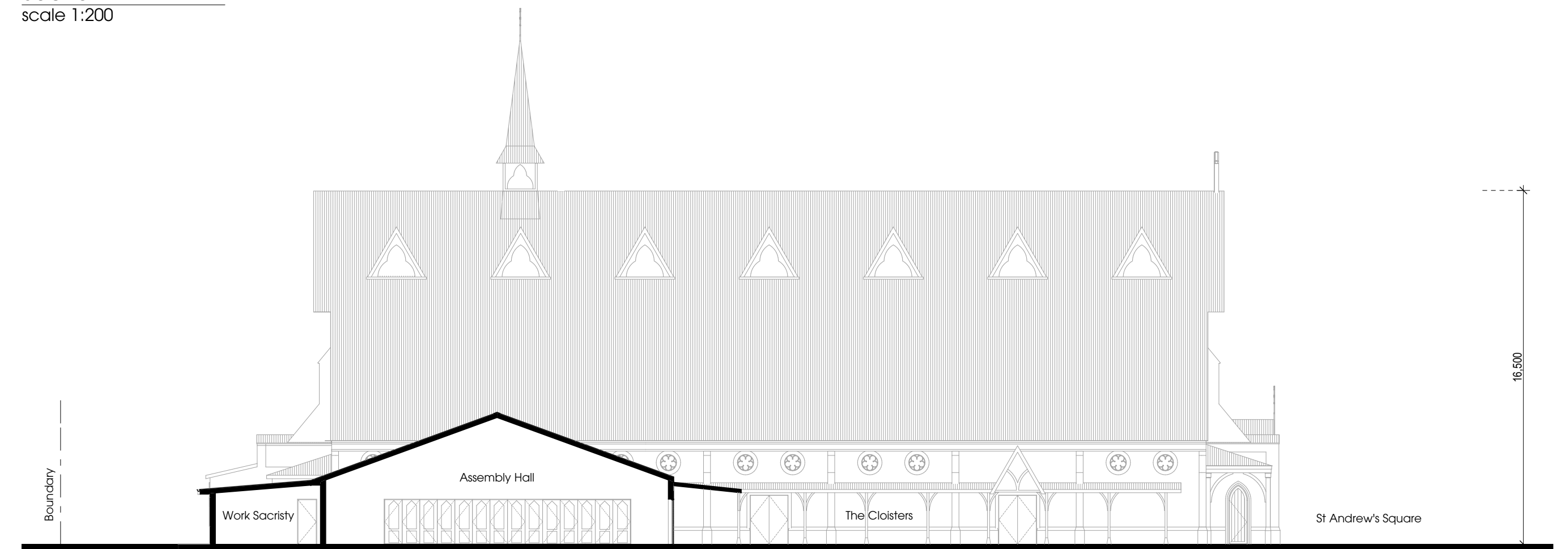
East Elevation  
scale 1:200



West Elevation  
scale 1:200



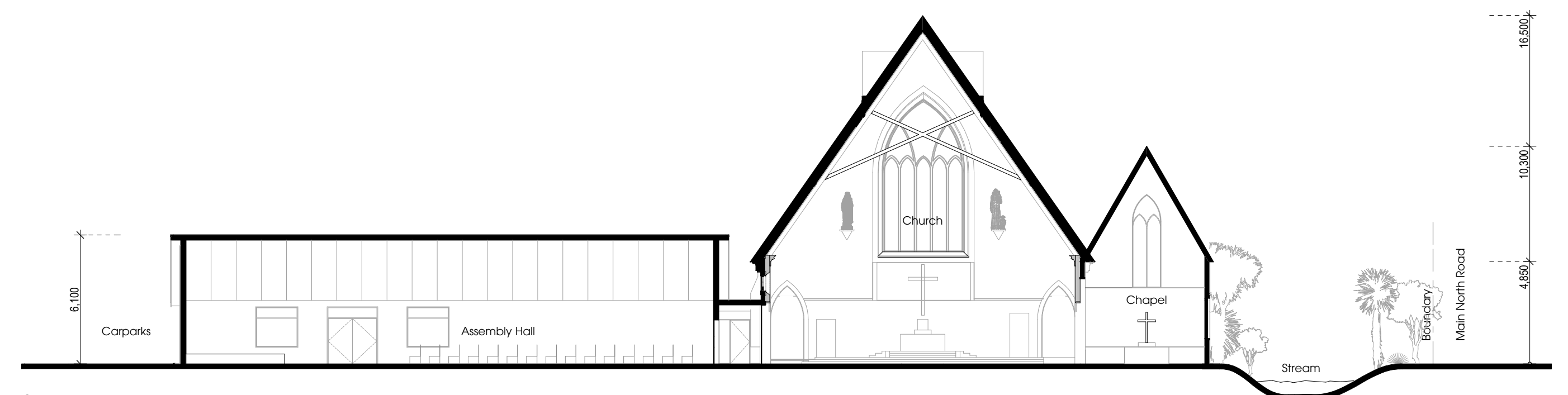
Section AA  
scale 1:200



Section BB  
scale 1:200



Section CC  
scale 1:200



Section DD  
scale 1:200



Concept Design

1. Site Plan

Our first major concept in developing our site development plan is community focus and integration. St Joseph's plays a major role in the local community, to those both within and without the Catholic faith. We believe it is critical that not only is the Church seen by the community, but access to it is easy and inviting.

We propose a courtyard on the southern corner of the site, which we have called St Joseph's Square. It is bounded by the new Church, existing Pastoral Centre, stream and Vagues Road. This space would be largely paved, but have a pedestrian feel. We would like it to be a "public" space, or better still, a "community" space, that neighbours and passers-by could frequent. This would be the Church's main connection with the community, and what better way to achieve this than to "offer" it to the community?

Trees around the edge would give some shade and bench seats would be provided. We envisage that a landscape architect be engaged to make the detail of this work.

It is designed as the front courtyard of the new Church, and would allow some car parking on a Sunday around the edges, as well as access for wedding cars and a hearse for funerals.

We have provided a second courtyard between the Pastoral Centre addition, the Hall and the Church. We call it the Cloisters, a cloistered space with a central grassed area. This space will be sunny and sheltered from the easterly. It provides a more intimate outdoor area for after-church gatherings. A large terrace at the northern end allows for outdoor services. We have placed a fountain on the axis of the Baptistry.

Courtyards are a very "Christchurch" device for providing a sunny space sheltered from cold winds. They are also very common in Church designs, and provide space for active participation as well as quiet contemplation.

An axis walkway has been created from the School, between the new and existing Pastoral Centres, with the Church narthex stepping out into it. This axis provides a strong link with the School. It will have a predominantly pedestrian feel, but still be wide enough for vehicle access.

Around the south eastern side of the site we have a more intimate area beside the stream, with a pleasant small courtyard at the entrance to the Chapel. This area has existing separate bridge links to the Main North Road, and is also easily accessed from St Joseph's Square, the community courtyard. The main vehicle access to the site is from Vagues Road to the north west of the existing Pastoral Centre, and a roadway is continued through the site around the back of the Hall and Church out to the Main North Road. This will be a two-way access with car parking along the side. The Presbytery is accessed from this roadway.

2. Church

The Church is conceived as a large singular volume space that encompasses the nave, sanctuary and choir loft. Connected to this main volume are the Narthex, Baptistry, Chapel, Adoration Chapel, Sacristy and Hall. Many of these spaces are expressed externally. Along with towers and the other associated buildings, all work together to convey the notion of a "City of God", a foretaste of the heavenly Jerusalem at the heart of which is Christ.

The main Church has relatively low walls and a tall roof that spans over a broad column free space. The result is a dramatic space with uninterrupted sightlines to the altar and sanctuary. This form is efficient to construct and is self brooding in an earthquake.

Before entering the nave one passes through the narthex. This is a transition space to assist in practical and spiritual preparation to enter the Church proper. It has doors at either end and can function like a large arched attenuating street noise and keeping inclement weather out of the Church when required. The narthex also serves as a de facto crying room that parents can retreat to whilst still having visual and audible access to the liturgical actions occurring inside the Church. The narthex provides access to the side courtyard, a small shop and choir loft above.

The choir loft is designed to hold a pipe organ and up to 50 people. It can also be used as another overflow space of significant liturgical events.

The absence of columns in this Church allows for wide rows of seating and uninterrupted views to the sanctuary and altar. This factor greatly assists active participation in the liturgy. It is natural with the arrangement of this Church that the seating towards the back is not as proximate to the altar as that in the front rows. Whilst proximity is helpful for active participation it is not essential provided the people are not so far away that they cannot hear or see what is happening in the sanctuary. The furthest seat in the nave is approximately 30m away from the altar. This is not an unreasonable distance when compared with other large churches.

It is important to remind ourselves that active participation is primarily about participation in the action of Christ who offers himself up to God in the Eucharistic sacrifice. The actions described in the Sacred Constitution on the Liturgy merely support this end. Emeritus Pope Benedict XVI describes active participation as the "oratio", the great prayer that forms part of the Eucharistic celebration. It is an inner process that brings us into deeper communion with God.

The Sanctuary is part of the overall nave space. Whilst making the building less complex to build it also creates a sense of unity between the priest and people. Within this overall unity, the sanctuary differentiates itself hierarchically as the proper place of the ministerial priesthood and the place of sacrifice. This is achieved through raised steps leading up to the altar and enhanced by a large stained glass window with ornamental reredos framing the altar and tabernacle behind. The roof fleche with its clerestory windows increases the daylight at the edge of the sanctuary to further highlight the point of transition. These design ideas further reinforce the pre-eminence of the sanctuary over the nave and the altar as the focal point of the whole Church.

The altar is raised two steps above the general sanctuary level which itself is three steps above the nave floor.

Behind the altar is placed the tabernacle. It is seen in relation to the altar to remind us that the real presence of God contained within is a fruit of the liturgy.

The general sanctuary level is wheelchair accessible. It is on this level that one may find the ambo, the President's chair, credence table, and additional seating for other clergy and servers.

The 15m cross width of the Church also allows for a sanctuary that is much wider than normal. This gives the sanctuary great flexibility to be used for larger liturgical occasions such as Christmas, Easter and School Masses. Additional seating can be found in the adjacent side Chapel, the narthex and the adjacent Hall. The side Chapel will seat up to 100 people and the narthex up to 50. The Hall is designed to seat up to 600 people. It can be opened up to the Church at one end to create clear views to the sanctuary. When not in use this opening between the Church and Hall is closed off with a paneled operable wall system with high acoustic rating. We will decorate this to make it look elegant.

3. Baptistry

Towards the main entrance of the Church on the right side of the nave is placed the Baptistry. This octagonal space is expressed externally on the Main North Road Elevation. It is situated adjacent to the existing stream that runs along this edge of the site. The facade of the Baptistry has water flowing from it into this stream as a symbolic reference to the Easter proclamation: "Vidi Aquam egredientem de templo, a latere dextro, alleuia." - "I saw water coming forth from the temple on the right side, alleuia". This is a reference to the saving waters of baptism that flow out into the world from the side of Christ who is the true temple.

As a sacrament of initiation into the Church it is appropriate that the Baptistry be placed towards the back. One must be baptised before joining in the community of believers and participating in the sacrifice of the Mass. The Baptistry also has its own door on the opposite side of the Church, which opens up to the courtyard with its own fountain on the same axis. Traditionally this side door was the normal congregational entrance since the front doors were only opened for major feasts and the visiting bishop. It is appropriate therefore that the baptismal sacrament begin at this side which leads to the baptismal font. Entry through this door for the baptised serves as a reminder of their own initiation into the Church as they re-orient themselves towards the altar by turning to walk down the central aisle.

The Baptistry is generally visible from every part of the Church. Its location creates great opportunity for the public witness of baptism and ceremonial procession from the sanctuary to the Baptistry, especially at the Easter vigil.

The font itself is designed for both infant and adult baptism by full immersion. The font takes the form of a cross shaped hole in the floor with steps leading into it on one side. The opposite side has a small infant font on a pedestal from which water flows to fill the larger floor font. When not in use the immersion font in the floor is covered by a trafficable surface made from metal or timber.

By using the cross shape the font invites those being baptised to die in the cross of Christ and to share in his resurrection.

Another option for the Baptistry may be to have it in the main nave on the central axis leading to the altar. In the common association with sacrifice and the cross, there is some relevance in tying both the sacrament of baptism with the sacrament of the Eucharist together more formally in the layout of the Church. As seen in other churches the font is placed in the midst of the people to further enhance the community aspect of baptism. In order to do this successfully allowance needs to be made for people and processions to move around the font easily without it becoming an obstacle. This can be achieved in our design.

4. Chapel

The Chapel is located to one side of the nave of the Church. Externally it appears as a small timber gothic Church that differentiates itself from the larger more solid form of the main Church building. The Chapel is designed for use by up to 100 people. It has its own entrance which also functions as a street entry to the Main North Road. The Chapel also serves as an overflow space for big occasions in the main Church.

As is the tradition in many churches this side Chapel may be dedicated to the Virgin Mary who holds a special honour as the Mother of the Church and Spouse of St Joseph to whom the main Church is dedicated.

5. Adoration Chapel

The Adoration Chapel is located directly behind the sanctuary in line with the central axis of the Church. The focus of the Chapel is the tabernacle which is located in the wall between it and the sanctuary. The tabernacle will be designed with two doors so that it can be accessed from either the sanctuary or Adoration Chapel side.

The Adoration Chapel is designed so that it can be accessed independently of the main Church. This allows the opportunity for private adoration of the blessed sacrament over 24 hours.

6. Presbytery

The Presbytery is a single storey building located in the north west corner of the site. As a private residence the building benefits from being away from the noise of the street and the public areas of the Church, School and Parish Centre. Visitors enter the Presbytery through a discrete entrance into a parlour with adjacent office. Beyond these spaces are the private quarters and living areas of the resident clergy.

The house also has a double car garage and a covered terrace with an outlook to a private garden.

7. Hall

The Assembly Hall has been designed as a flexible open space. It can house up to 600 people - students with teachers and parents. The regular steel portal frame structure with a possible addition of operable walls allows for flexible division of the internal space and is suitable for diverse activities. The Hall is connected to the Church through an operable wall with high acoustic rating. After opening, the capacity of the Church could be extended by 300 seats with unobstructed visibility towards the Sanctuary.

The Assembly Hall opens onto the Cloisters, the inner courtyard, through three sets of doors. This arrangement allows for safe and weather protected spill out space after large school gatherings; the students would exit into this partly enclosed outdoor space away from any vehicles.

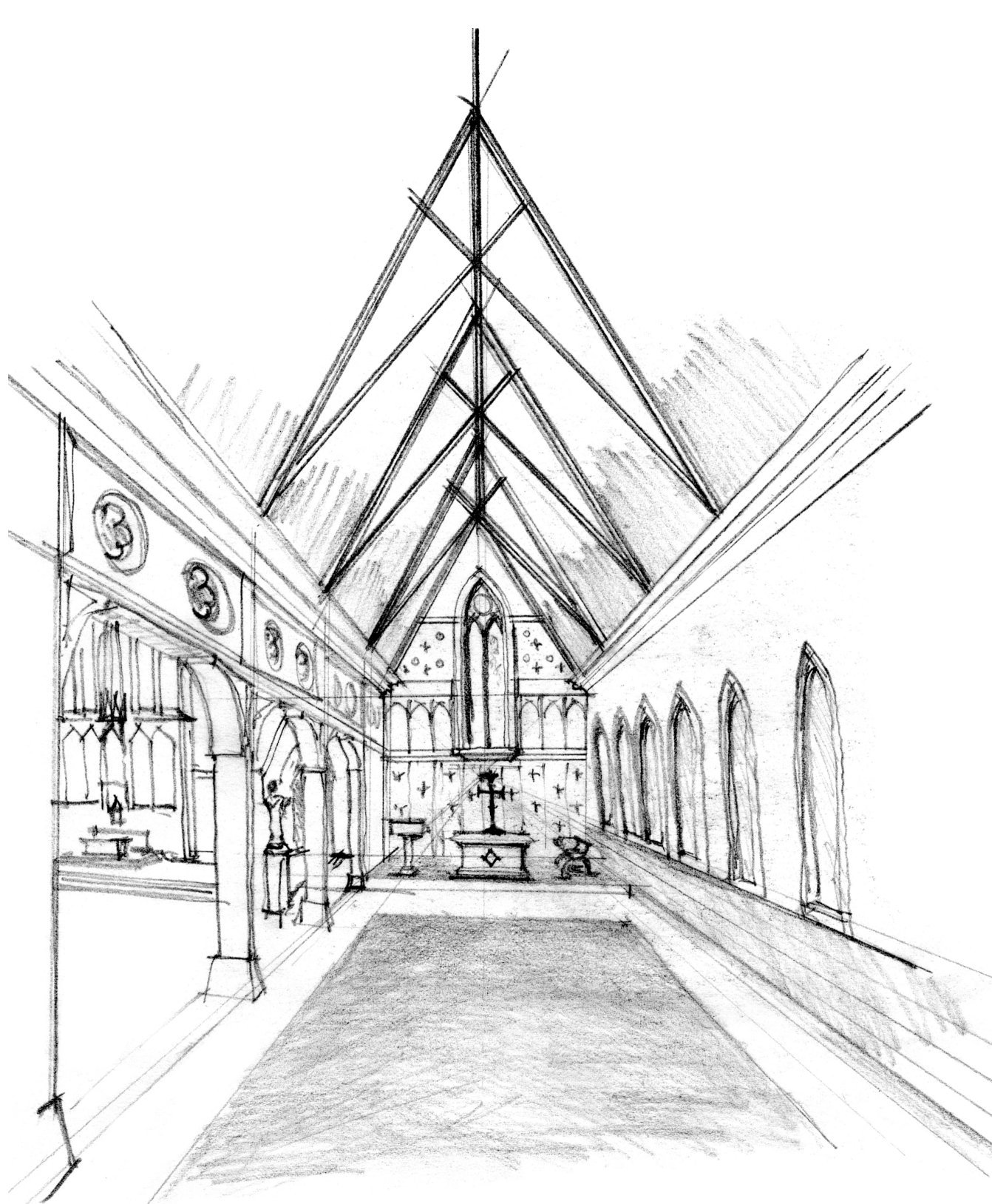
The Hall is also designed to have a direct connection with the kitchen through one set of doors and a servicey window.

8. Pastoral Centre

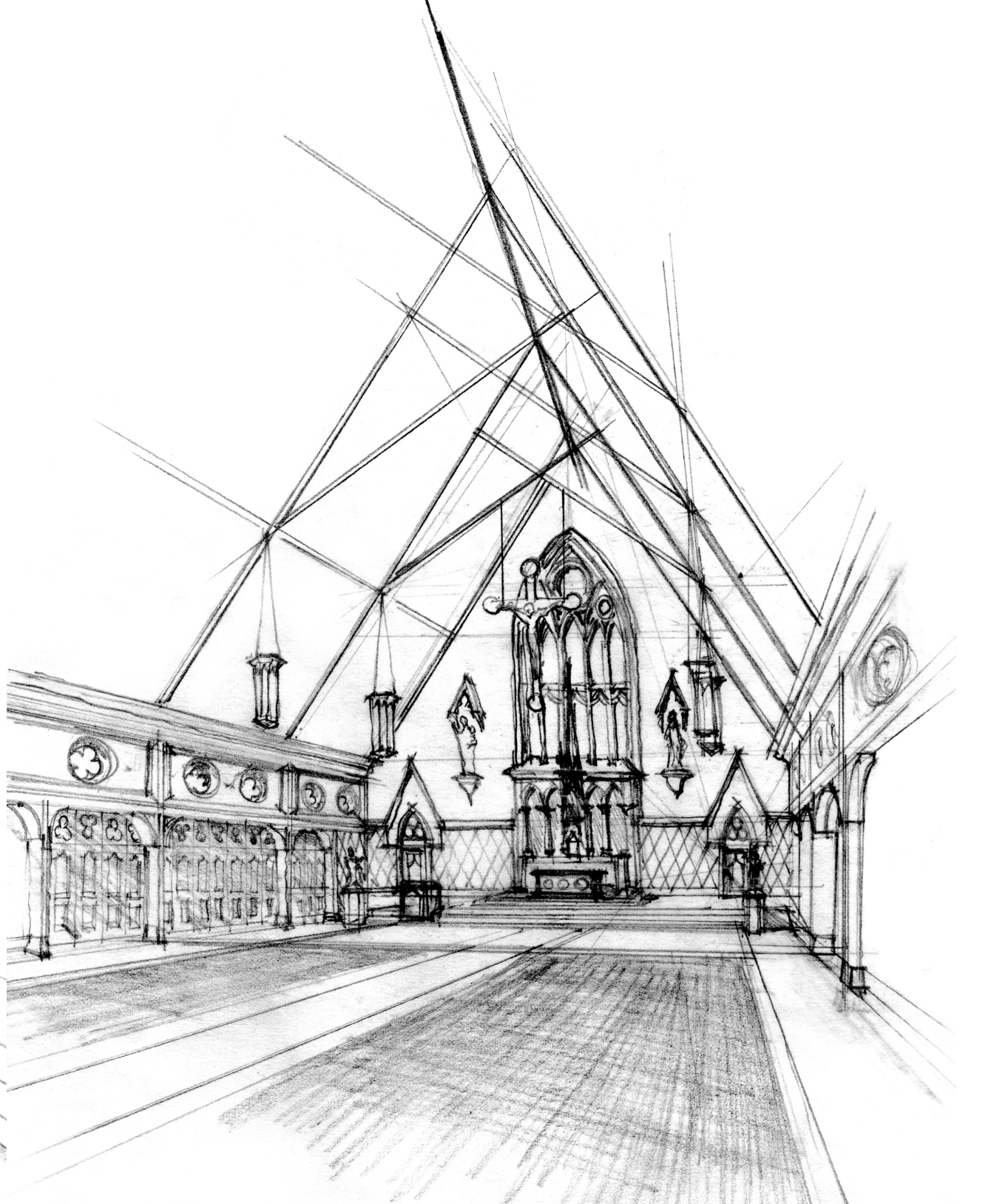
The new Pastoral Centre space has been positioned in the western wing around the Cloisters. It would be built with a timber framed structure, a low roof so as not to limit the sun access into the courtyard and a brick veneer facade to relate to the existing Pastoral Centre building.

This wing could be constructed as a staged development in the separate segments:

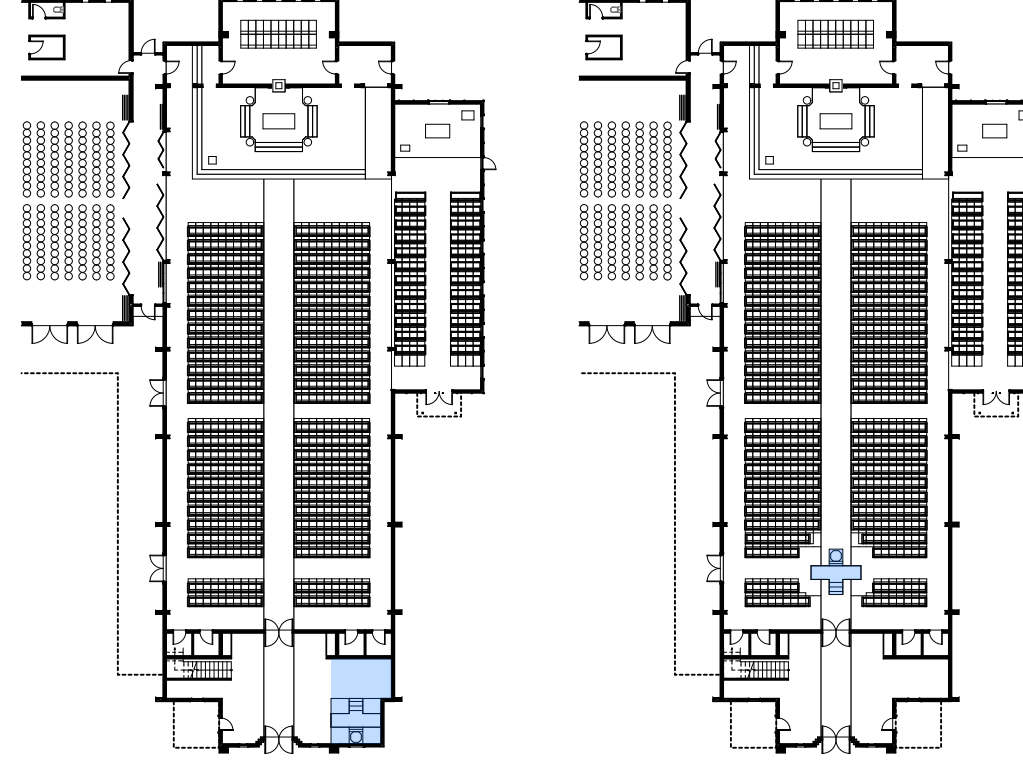
- The commercial kitchen and a food storage space, adjacent to the Assembly Hall with a separate entrance from the street side that would be used for deliveries and could be monitored easily.
- The toilets located more to the south that would be accessed from the whole complex through covered walkways
- The Pastoral Centre containing three offices and two meeting rooms.



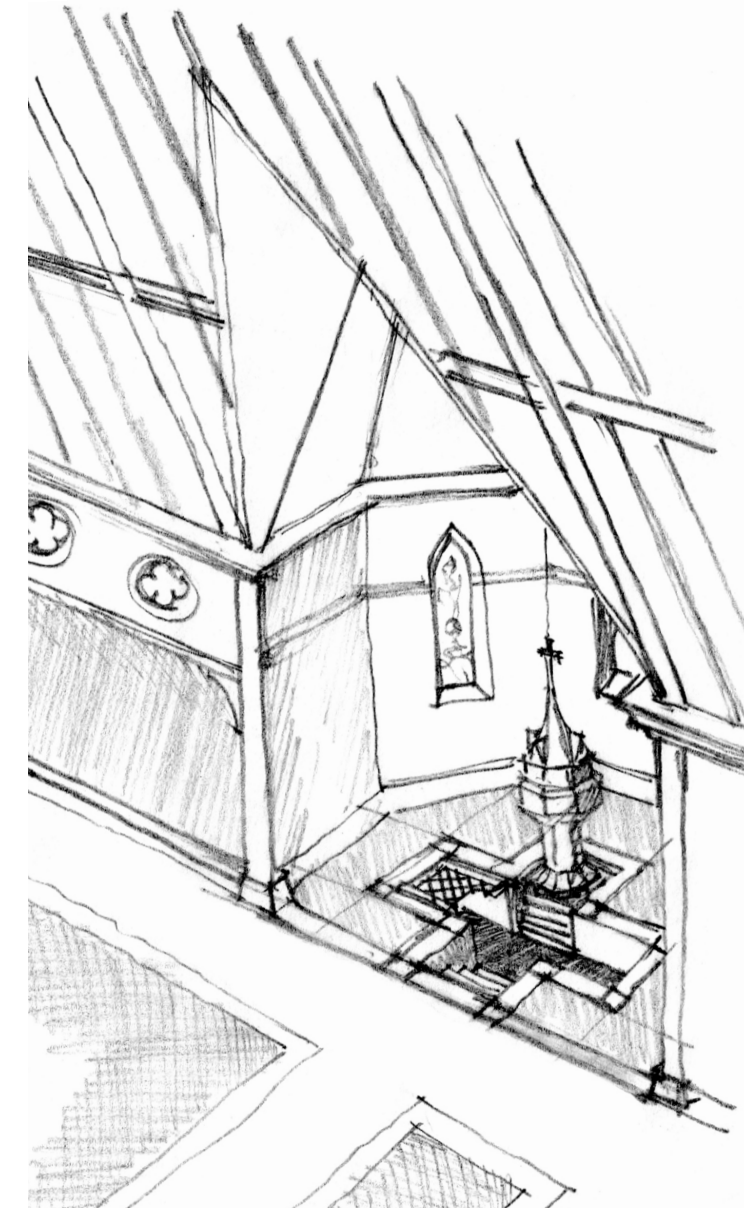
Chapel



Sanctuary



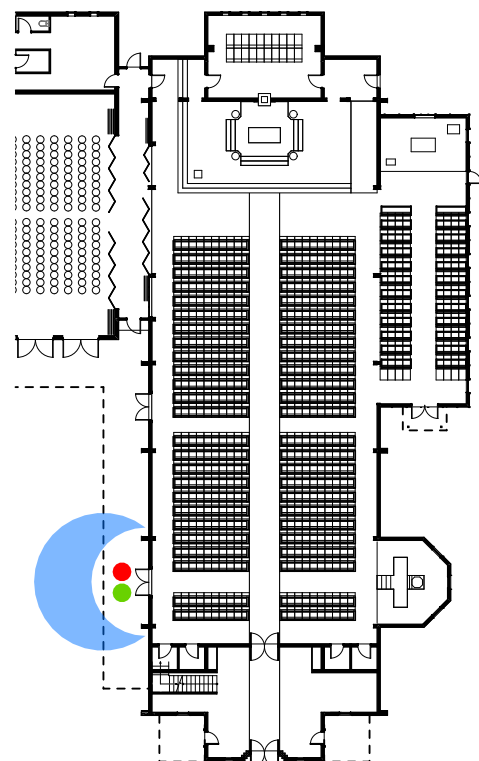
Alternative Baptistry Locations  
scale 1:500



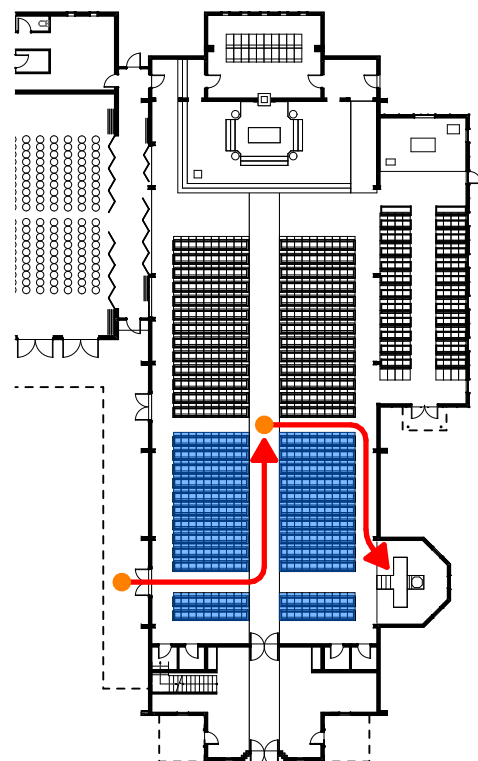
Baptistry

Legend

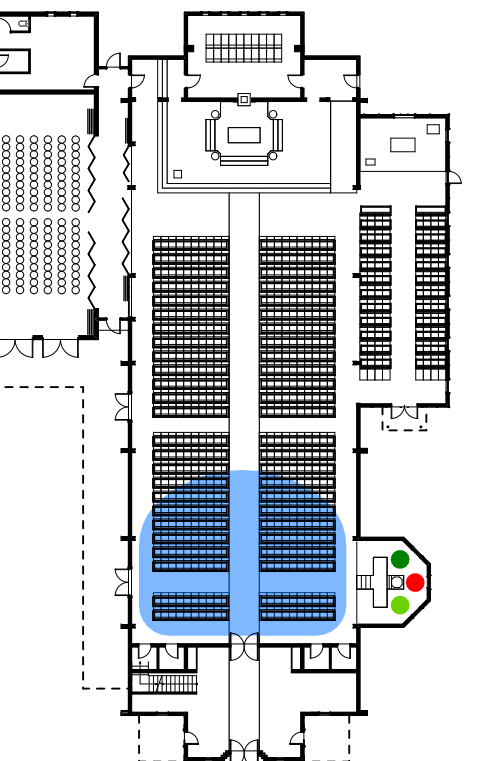
- People
- Processional Route
- Priest
- Priest Celebrant
- Priest / Presider
- Bishop and attendants
- Clergy
- Parents
- Godparents
- Place for readings and homily
- Bride and groom
- Ambo
- Coffin
- Catechumens
- Altar
- Servers
- Pascal Candle
- Easter fire



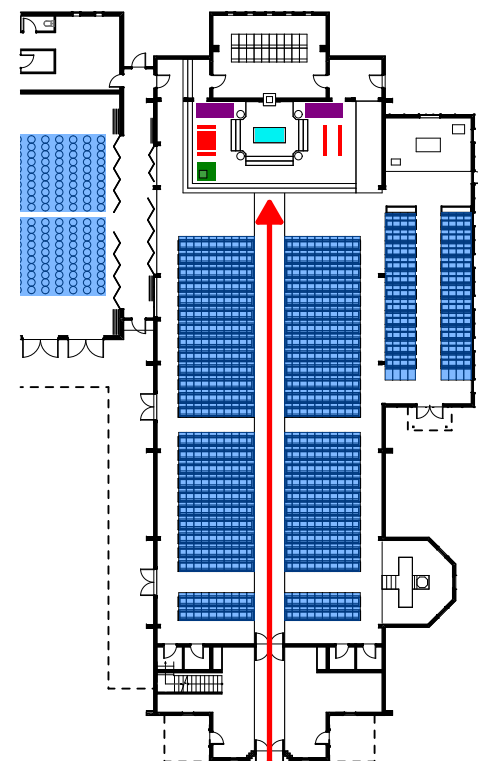
Baptism - Reception of Child



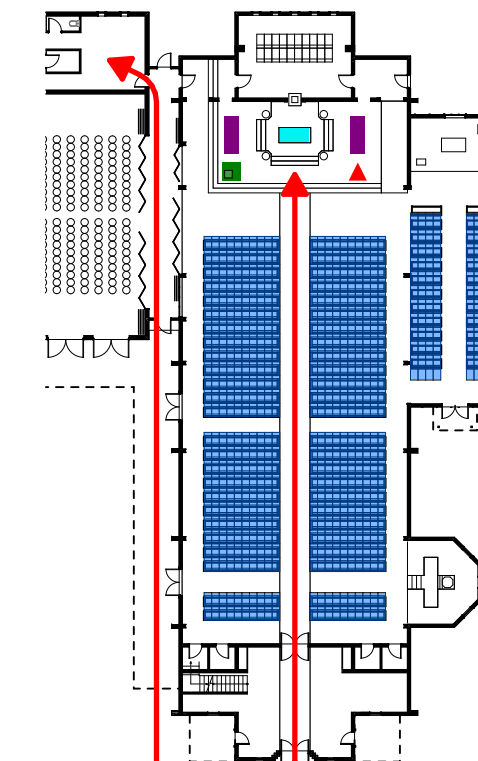
Baptism - Readings and Homily



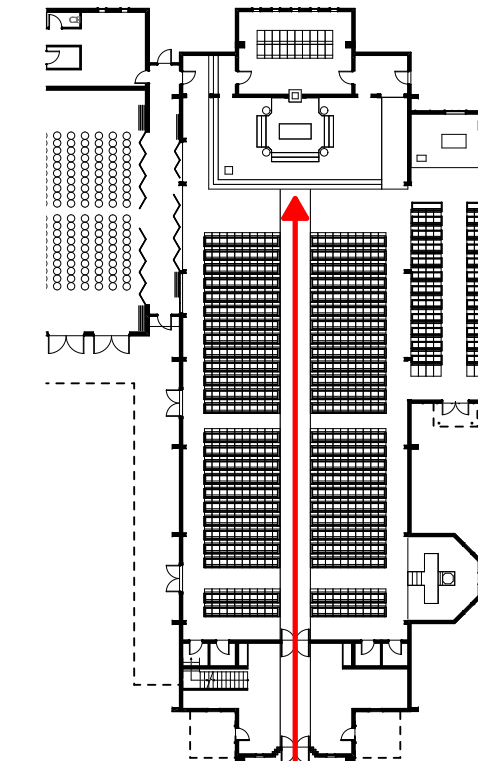
Baptism - Celebration of Sacrament



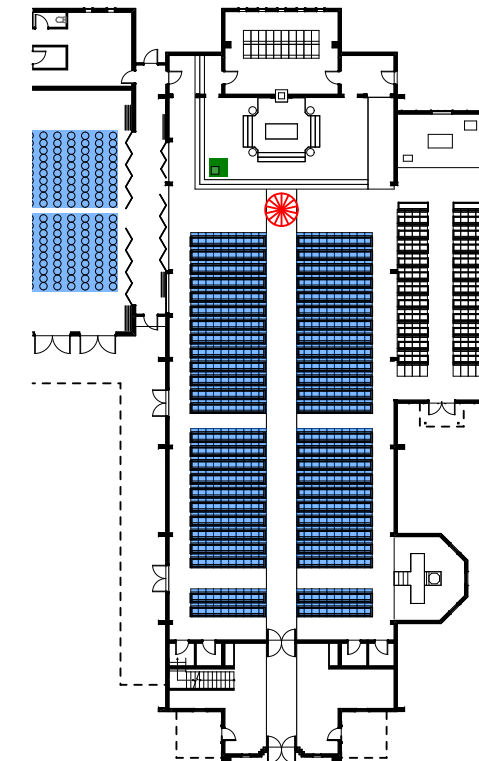
Mass with Local Ordinary and/or Visiting Clergy



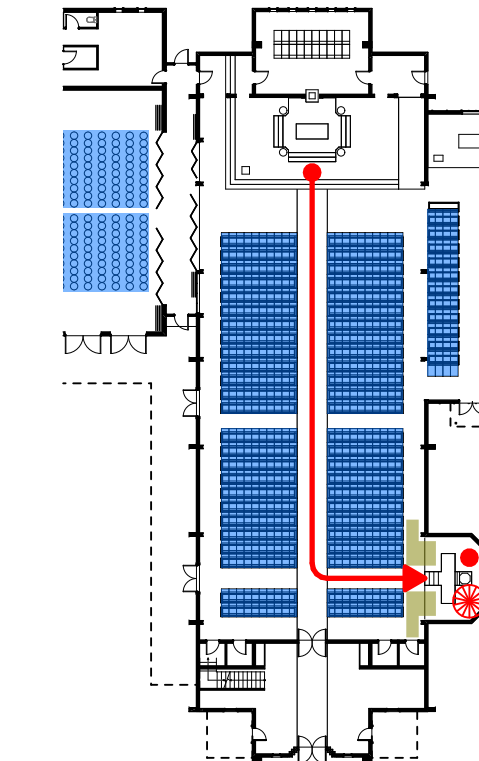
Mass Sunday and Feast Days



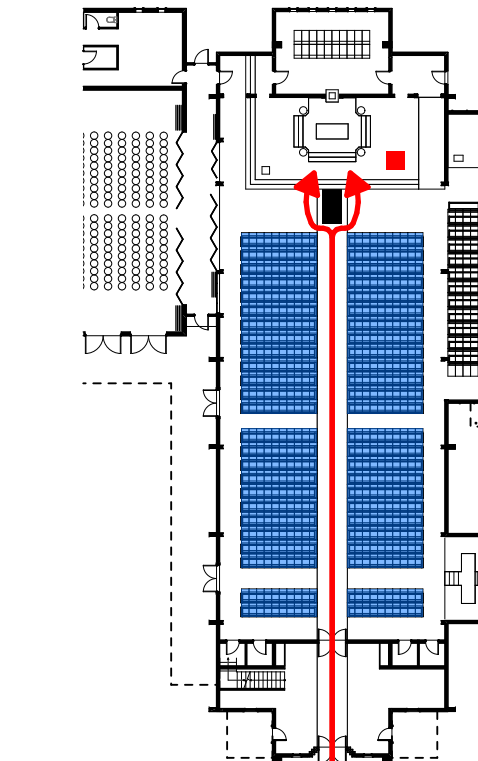
Easter Vigil - Service of Light



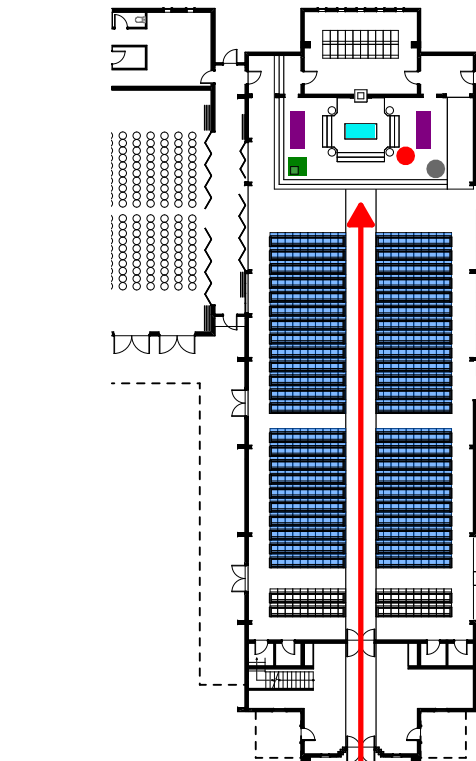
Easter Vigil - Exultet and Prophecies Proclaimed



Easter Vigil - Baptismal Liturgy



Funeral / Requiem



Marriage Nuptial Mass

Liturgical Diagrams  
scale 1:500